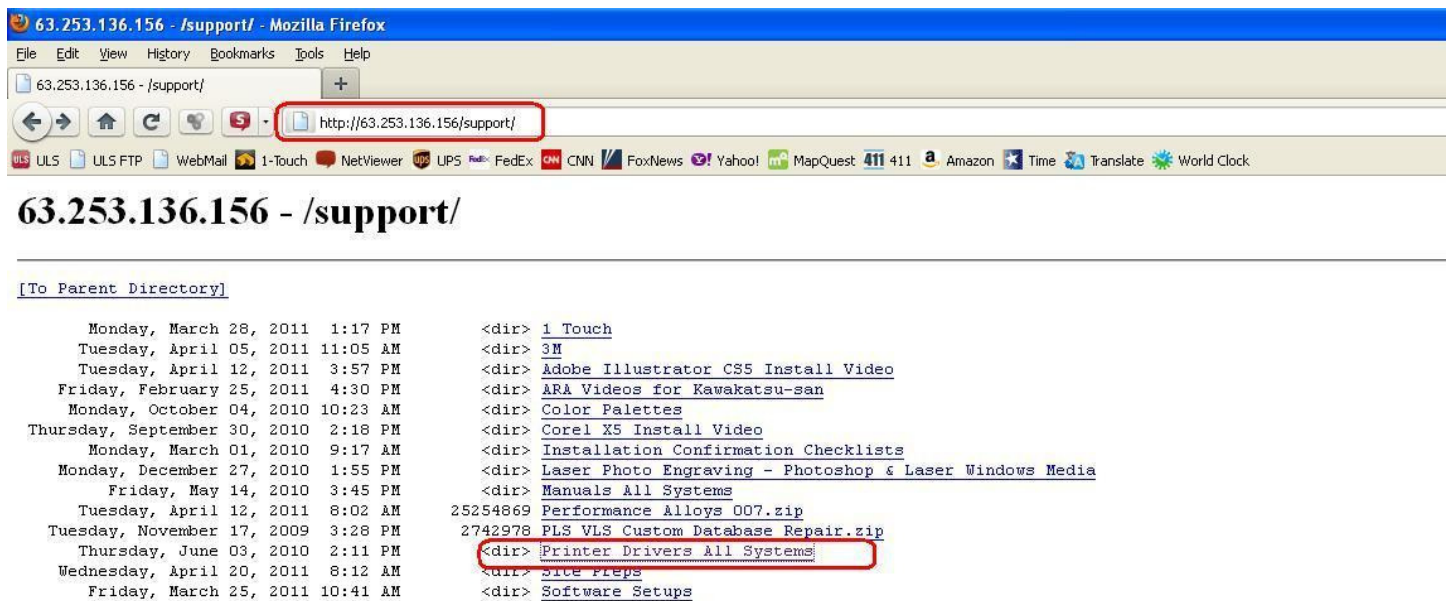


# MVX Printer Driver Installation

## READ FIRST!

This document will guide you through downloading a driver from the Universal Laser Systems FTP site and installing it for any MVX laser engraving system. For ease of explanation, I have selected V Class as the engraver to install the driver onto a Windows XP computer. You will need to ensure that you select the same model in the driver as what the engraver displays when it boots up – failure to use the correct driver will result in a driver conflict error. You will also need to ensure that you pick the correct driver package for the version of Windows that you have. Windows Vista & Windows 7 will install in a similar manner but many of the windows/screens will look different.

**Step 1** – Navigate to and access the ULS FTP site at <http://63.253.136.156/support/> and click on the “Printer Drivers All Systems”:



63.253.136.156 - /support/ - Mozilla Firefox

File Edit View History Bookmarks Tools Help

63.253.136.156 - /support/ +

http://63.253.136.156/support/

ULS ULS ULS FTP WebMail 1-Touch NetViewer UPS FedEx CNN FoxNews Yahoo! MapQuest 411 411 Amazon Time Translate World Clock

---

### 63.253.136.156 - /support/

---

[To Parent Directory]

Monday, March 28, 2011 1:17 PM	<dir> 1 Touch
Tuesday, April 05, 2011 11:05 AM	<dir> 3M
Tuesday, April 12, 2011 3:57 PM	<dir> Adobe Illustrator CS5 Install Video
Friday, February 25, 2011 4:30 PM	<dir> ARA Videos for Kawakatsu-san
Monday, October 04, 2010 10:23 AM	<dir> Color Palettes
Thursday, September 30, 2010 2:18 PM	<dir> Corel X5 Install Video
Monday, March 01, 2010 9:17 AM	<dir> Installation Confirmation Checklists
Monday, December 27, 2010 1:55 PM	<dir> Laser Photo Engraving - Photoshop & Laser Windows Media
Friday, May 14, 2010 3:45 PM	<dir> Manuals All Systems
Tuesday, April 12, 2011 8:02 AM	25254869 Performance Alloys 007.zip
Tuesday, November 17, 2009 3:28 PM	2742978 PLS VLS Custom Database Repair.zip
Thursday, June 03, 2010 2:11 PM	<dir> <b>Printer Drivers All Systems</b>
Wednesday, April 20, 2011 8:12 AM	<dir> Site Preps
Friday, March 25, 2011 10:41 AM	<dir> Software Setups

**Step 2** – Click on the “Drivers M\_V\_X” Link:



63.253.136.156 - /support/Printer Drivers All Systems/ - Mozilla Firefox

File Edit View History Bookmarks Tools Help

63.253.136.156 - /support/Printer Drivers Al... +

http://63.253.136.156/support/Printer Drivers All Systems/

ULS ULS ULS FTP WebMail 1-Touch NetViewer UPS FedEx CNN FoxNews Yahoo! MapQuest 411 411 Amazon Time Translate World Clock

---

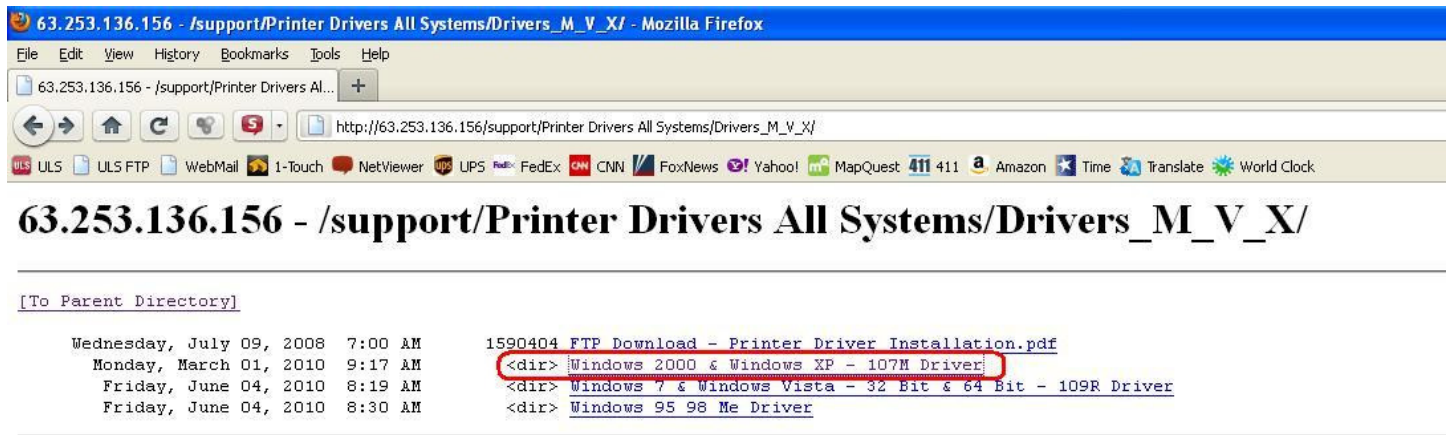
### 63.253.136.156 - /support/Printer Drivers All Systems/

---

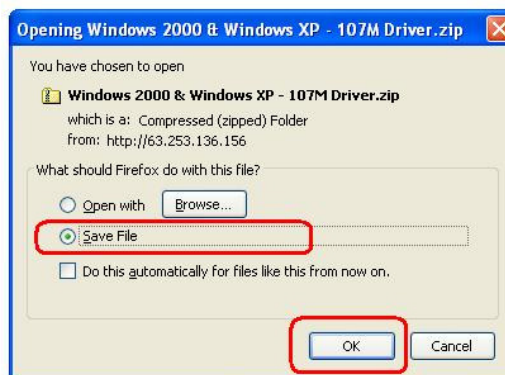
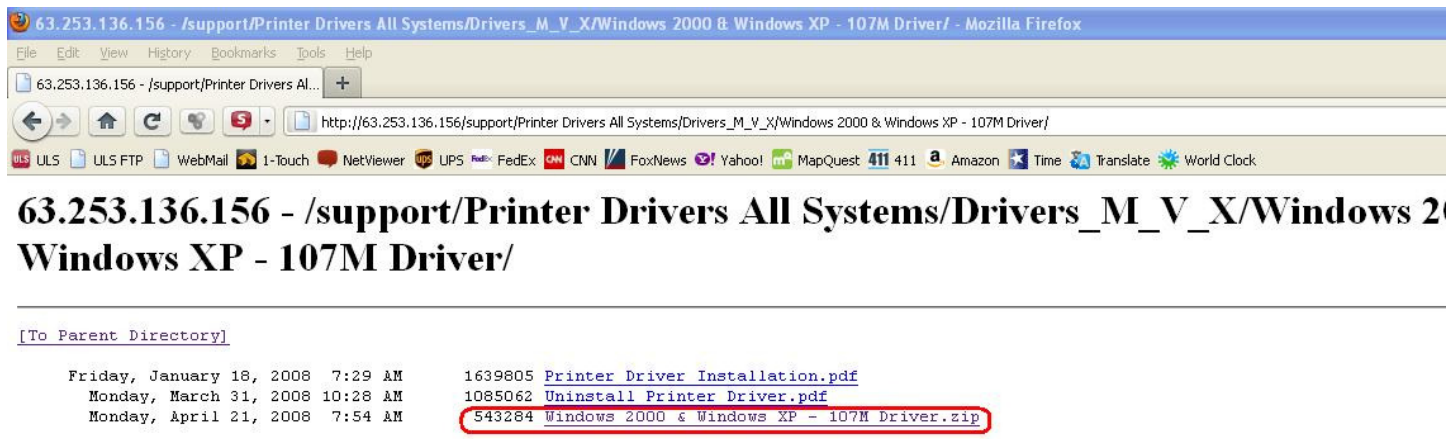
[To Parent Directory]

Wednesday, April 06, 2011 2:31 PM	<dir> Drivers VLS PLS ILS
Friday, May 28, 2010 9:09 AM	<dir> <b>Drivers M V X</b>
Friday, February 18, 2011 10:38 AM	<dir> Drivers VL200 VL300
Monday, September 27, 2010 9:11 AM	<dir> XL Series Firmware Drivers

**Step 3** – Click on the “Windows 2000 & Windows XP – 107M Driver” link:



**Step 4** – Click on the “Windows 2000 & Windows XP – 107M Driver.zip” link. A message box appears – click on “Save File” and then OK to download to your computer. Be sure to download to your desktop or elsewhere that you can easily find the downloaded ZIP file:



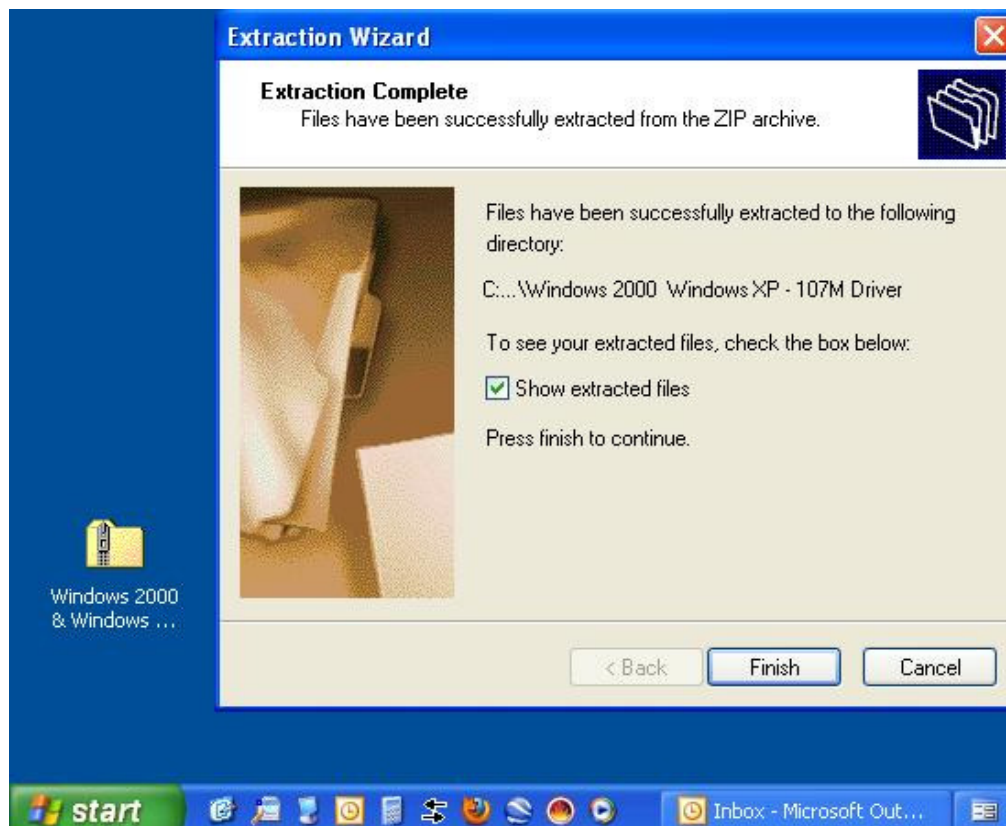
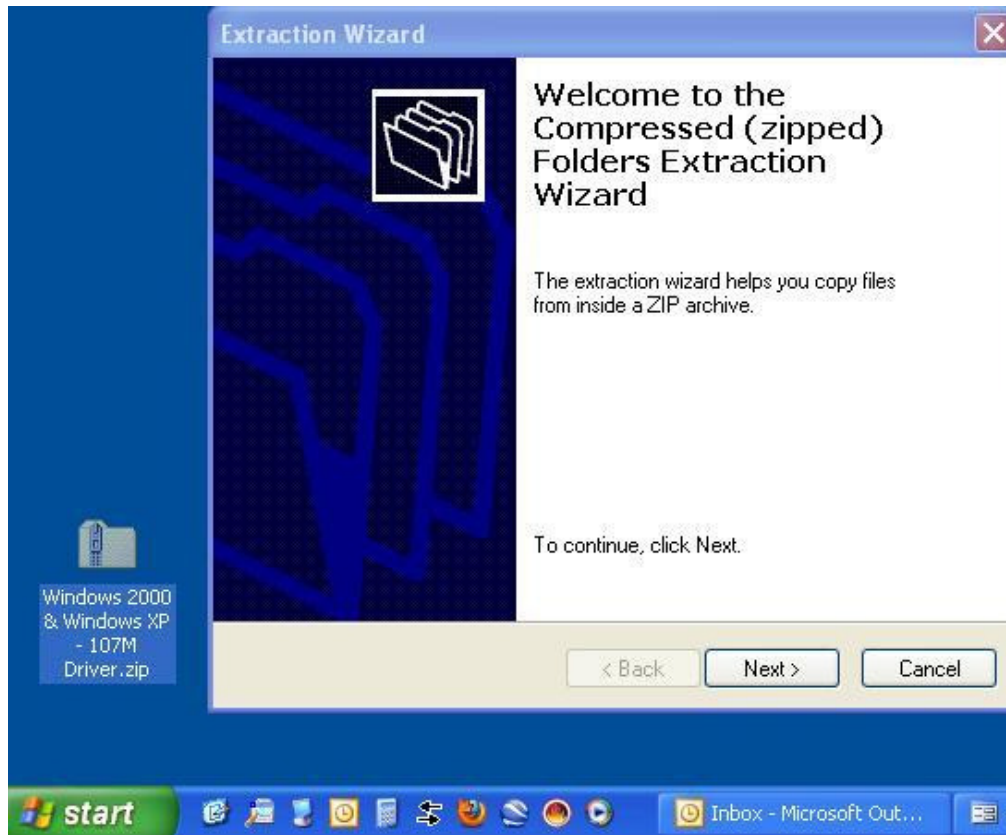
After the ZIP file downloads, you can close your web browser.

**Step 5** – Locate the downloaded ZIP File and right-click on it to extract it:



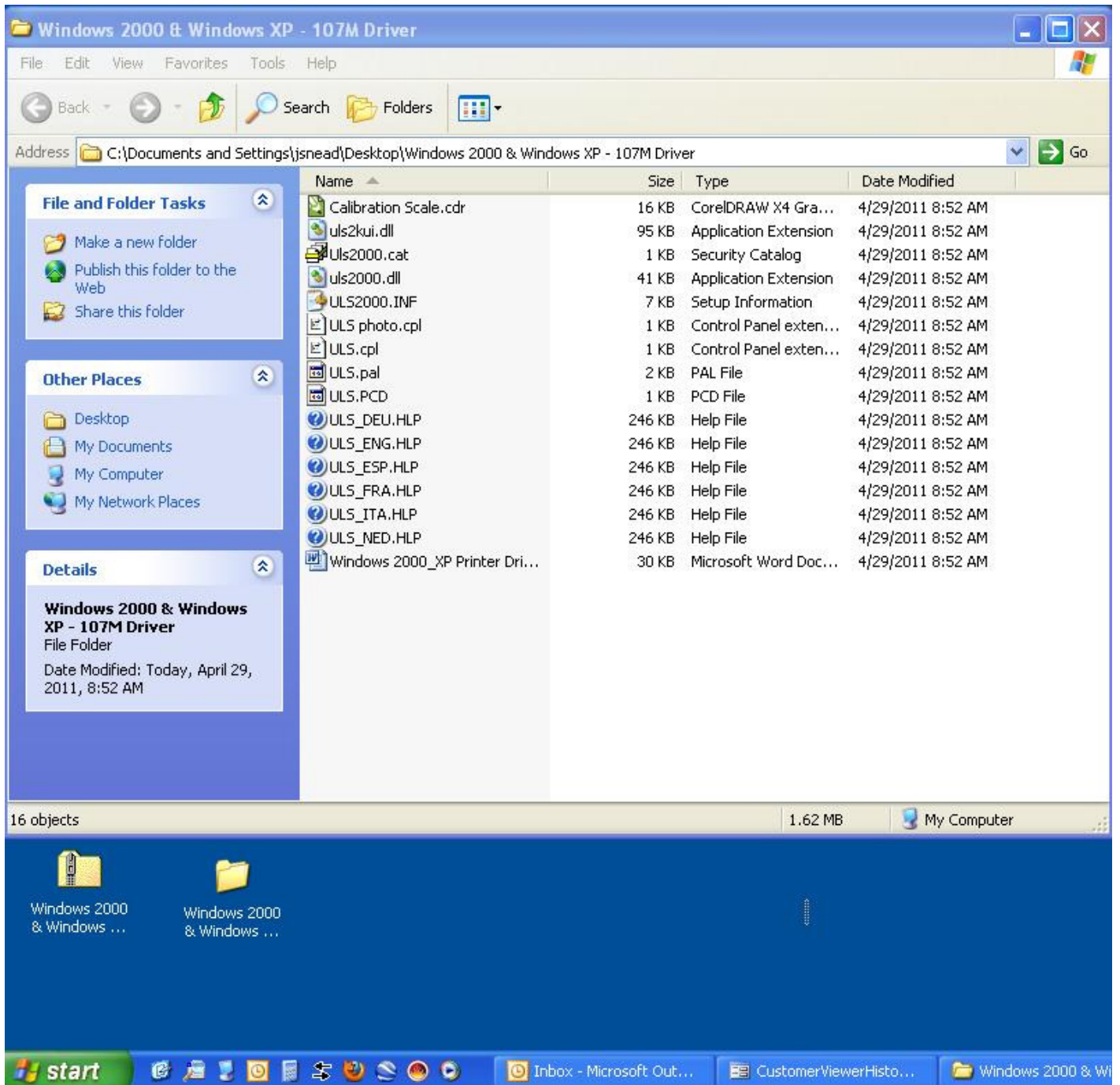
**Select “Extract All” to bring up the wizard to unzip the file. If you don’t have a built-in extraction utility such as this, you will need to use WinZip or other extraction utility to unzip the ZIP file.**

**Step 6** – Follow through the default steps to extract the ZIP folder to your desktop (or other place you can easily find on your computer):

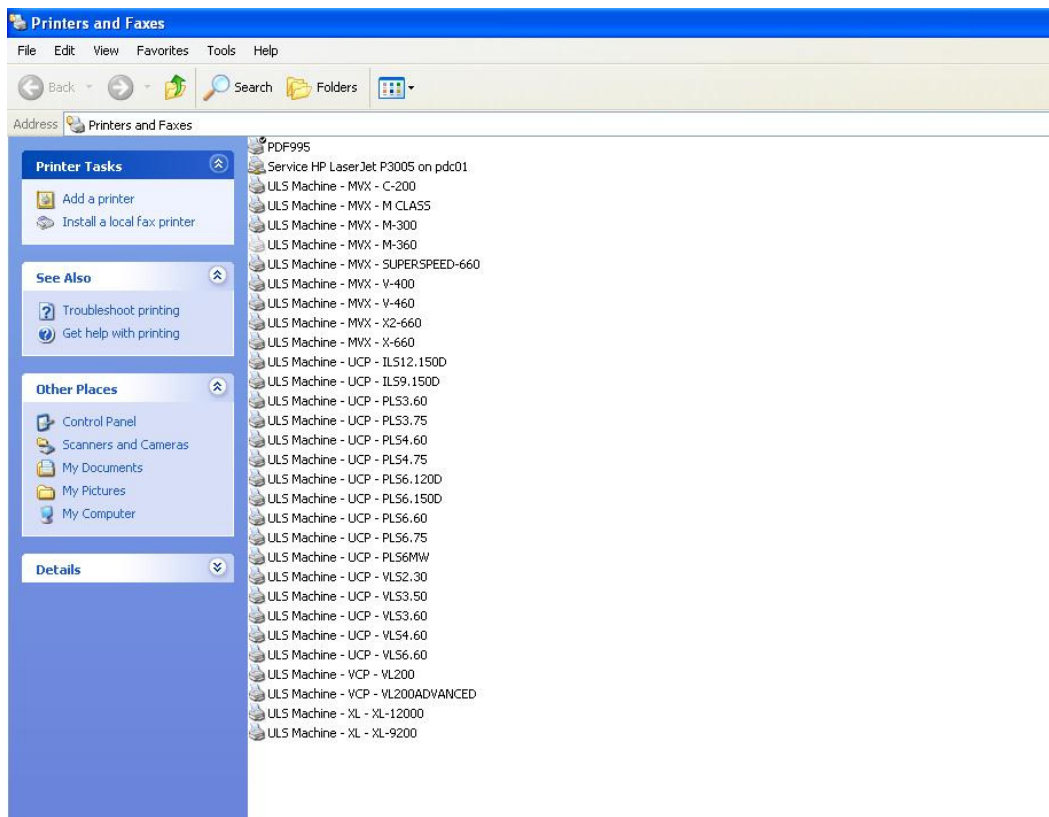




When the extraction wizard closes, you should see the extracted folder with all of the driver files:



**Step 7** – Navigate to the Printers & Faxes folder to start the printer installation wizard. Once the Printers & Faxes window opens, click on the “Add a printer” link to start the wizard:



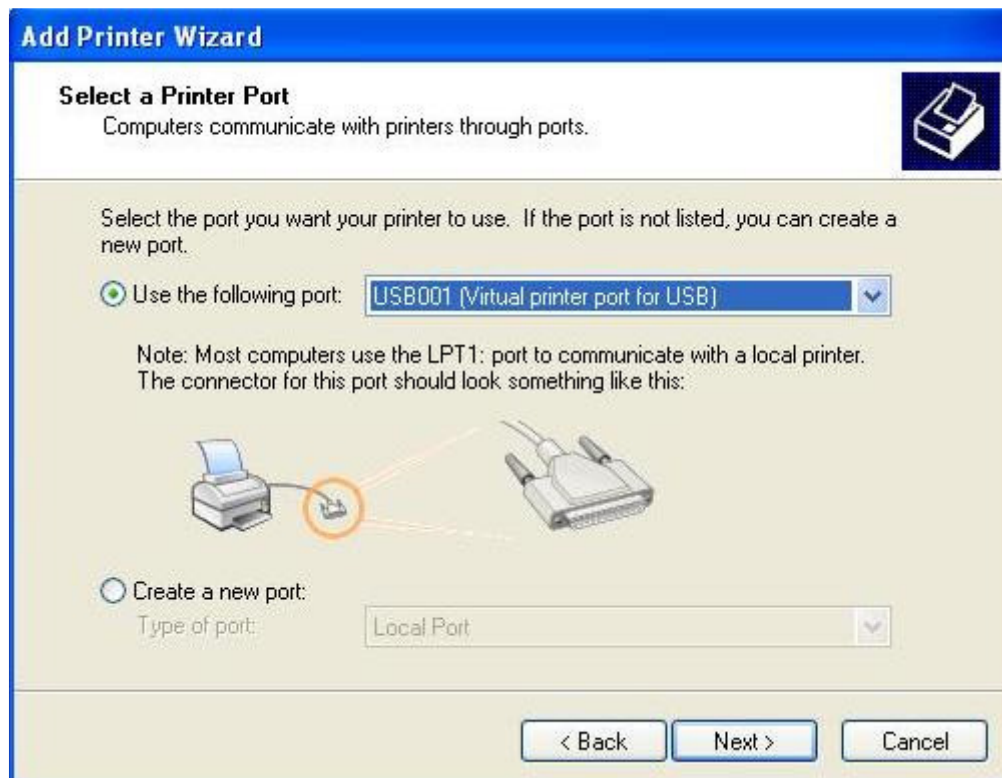
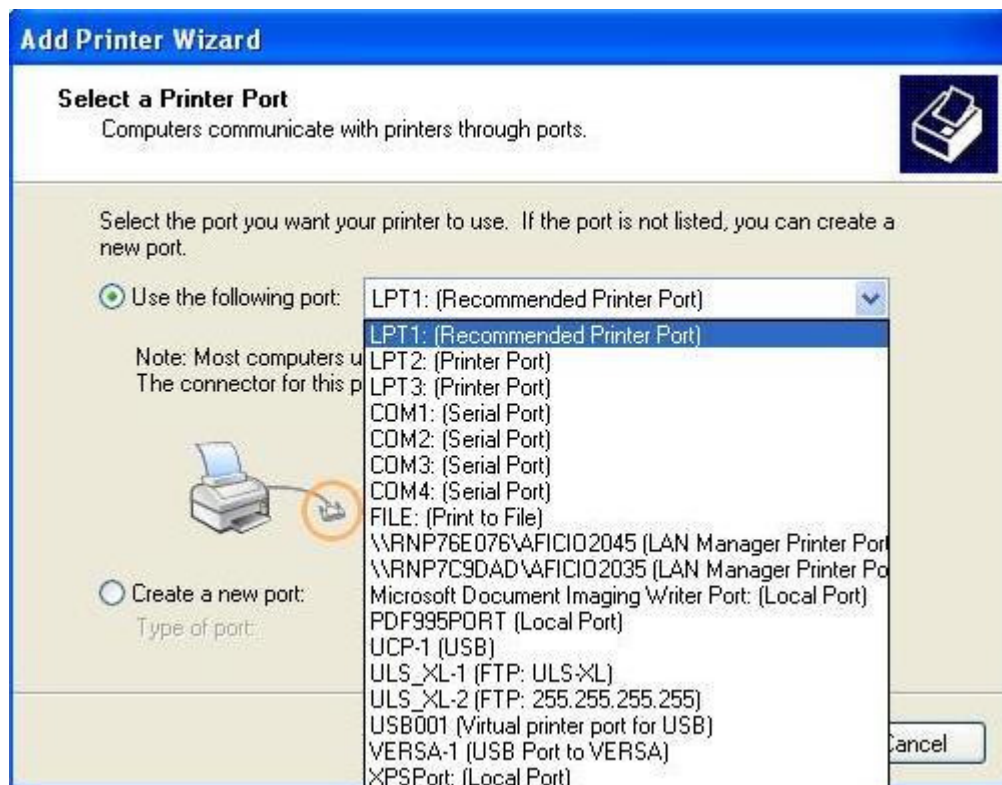
Depending on your version of Windows, this procedure will vary. The procedure shown from here on out is for Windows XP. Windows 7 & Windows Vista will look similar but the screens will have some variation from the screens shown below.

Step 8 – The Add Printer Wizard starts, click Next:



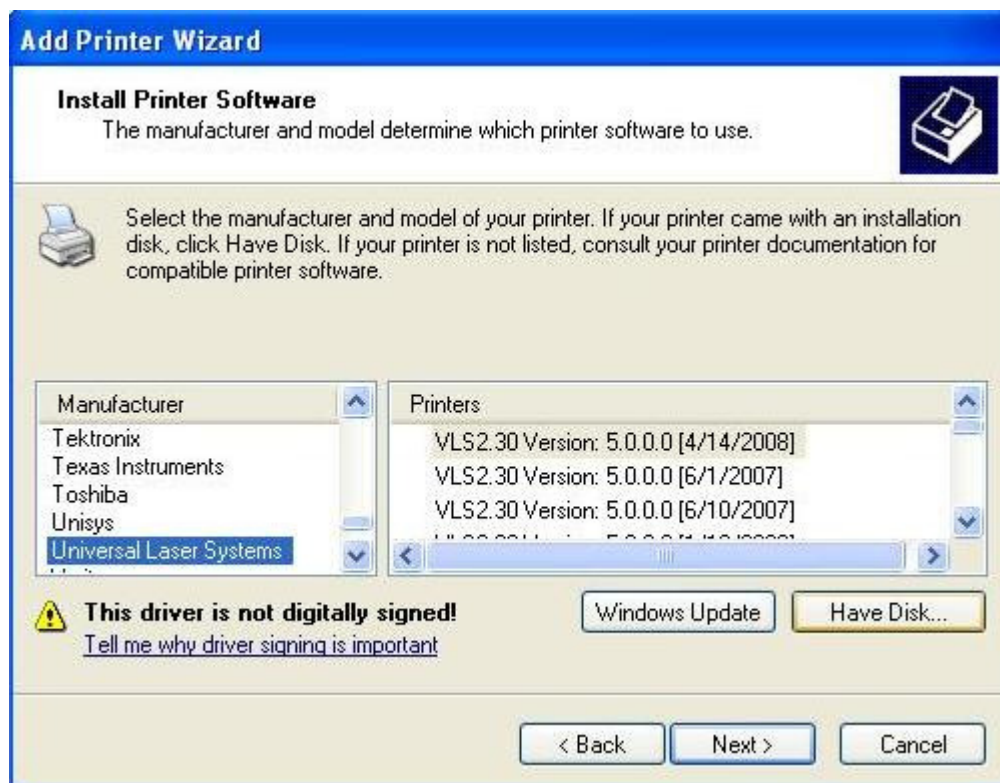
Be sure that “**Local printer attached to this computer**” is selected and “**Automatically detect and install my Plug and Play printer**” is **UNCHECKED**, then click **Next**.

**Step 9** – Select the correct port. In this example, I am installing a V Class on a Windows XP computer that is connected with a Parallel to USB cable. If your cable is a parallel to parallel cable, you will need to select an LPT port, usually LPT1. If your cable is a parallel to USB cable, you will need to select a USB00 port, usually USB001. After the correct port selection is made, click **Next**:

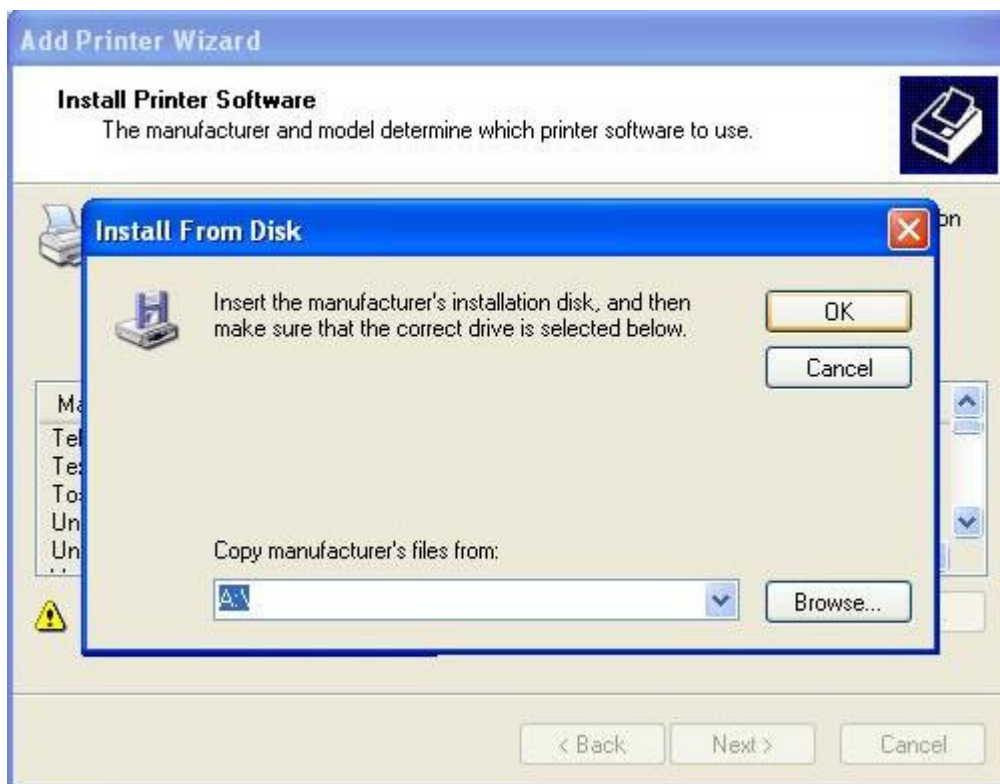




**Step 10** – Click the **Have Disk** button:



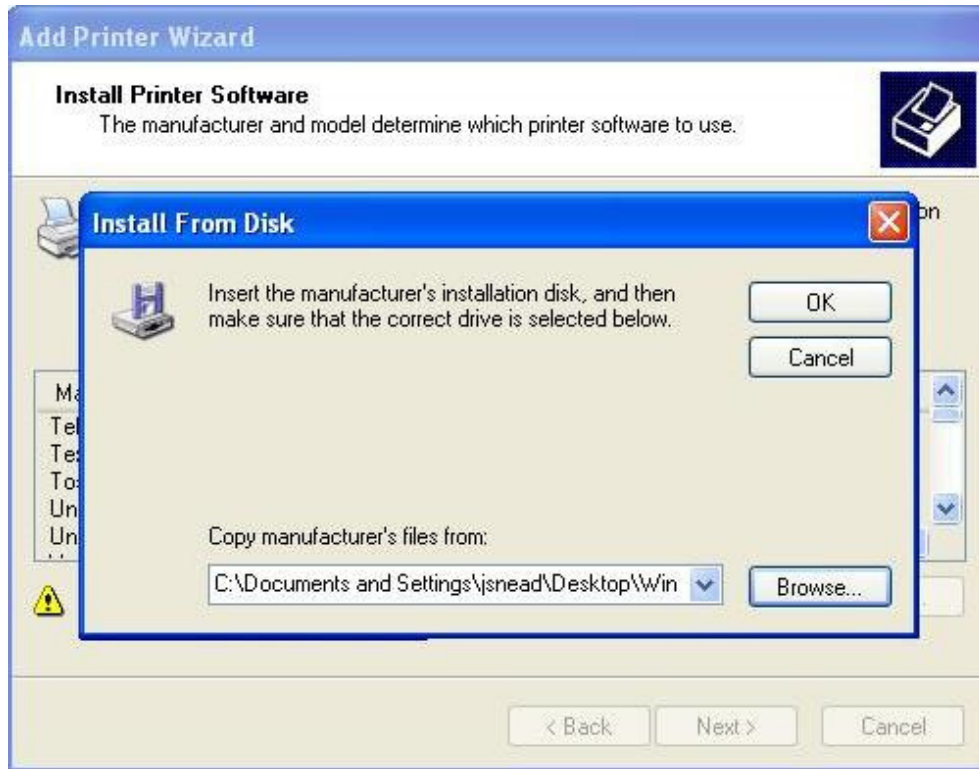
**Step 11** – An **Install From Disk** window opens, click on the **Browse** button:



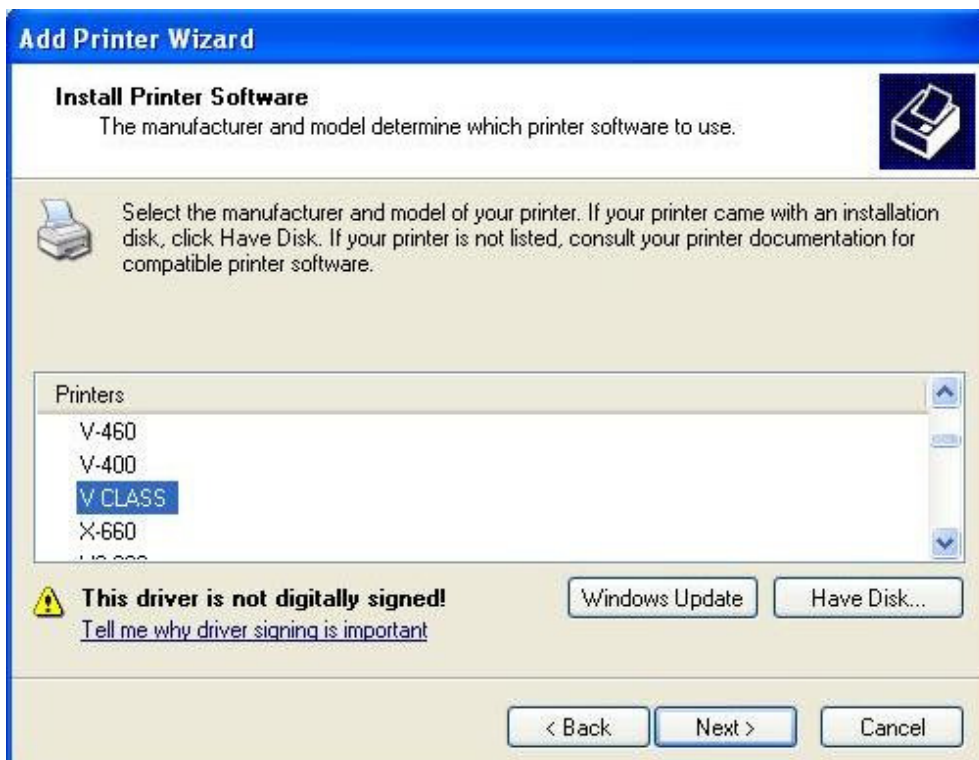
**Step 12** – The **Locate File** window opens. Use this window to navigate to the driver folder that you previously unzipped. Inside that folder, you will see a file named **“ULS2000.inf”** (the .inf extension may be hidden but this is not a problem. **Double-Click** on the **ULS2000.inf** file:



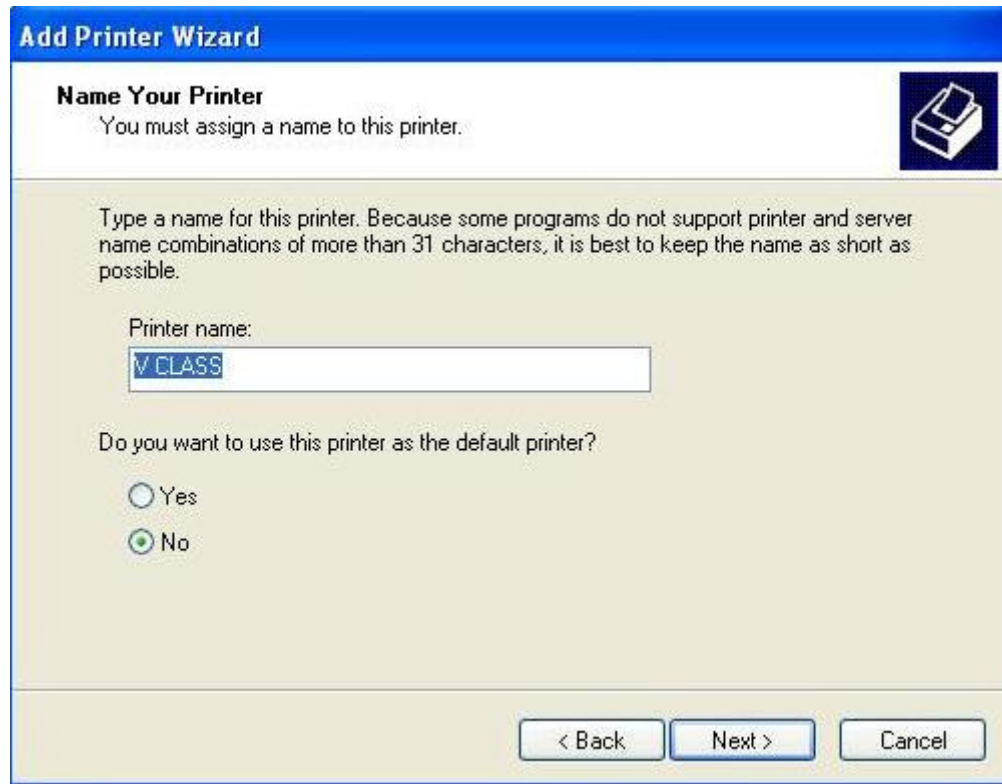
**Step 12** – After the ULS2000.inf file is clicked on, the **Locate File** window will disappear leaving only the **Install From Disk** window and the **Add Printer Wizard** window. On the **Install From Disk** window, click **OK** and the **Install From Disk** window will close leaving only the **Add Printer Wizard** window:



**Step 12** – On the **Add Printer Wizard** window, scroll through the available list to select the driver you wish to install. In this example, I have selected **V CLASS**. After selecting your driver model, click **Next**:

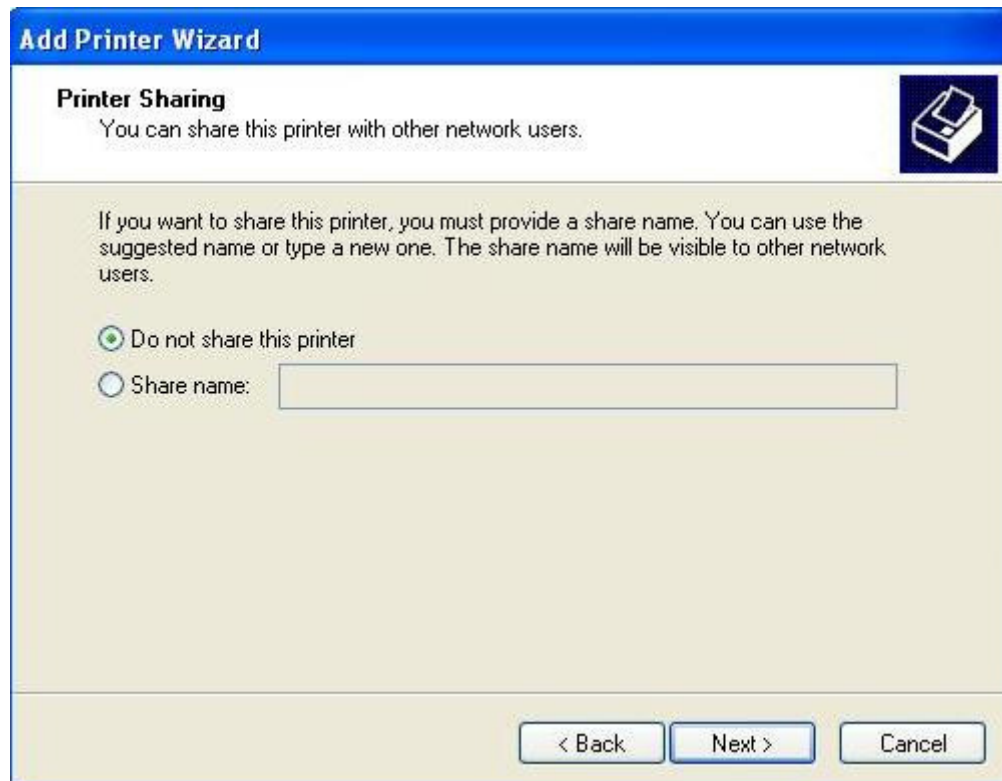


**Step 13** – Ensure that the printer name reads the same as the model you select and then click **Next**. It is not necessary to choose the default setting at this point as that can be changed at any time after driver is installed:



The screenshot shows the 'Add Printer Wizard' dialog box with the title bar 'Add Printer Wizard'. The main heading is 'Name Your Printer' with a printer icon in the top right corner. Below the heading, it says 'You must assign a name to this printer.' The main text area contains the instruction: 'Type a name for this printer. Because some programs do not support printer and server name combinations of more than 31 characters, it is best to keep the name as short as possible.' Below this is a text box labeled 'Printer name:' containing the text 'V CLASS'. Underneath the text box is the question 'Do you want to use this printer as the default printer?' with two radio button options: 'Yes' (unselected) and 'No' (selected). At the bottom right, there are three buttons: '< Back', 'Next >', and 'Cancel'.

**Step 14** – Ensure that “**Do not share this printer**” is selected and then click **Next**:



The screenshot shows the 'Add Printer Wizard' dialog box with the title bar 'Add Printer Wizard'. The main heading is 'Printer Sharing' with a printer icon in the top right corner. Below the heading, it says 'You can share this printer with other network users.' The main text area contains the instruction: 'If you want to share this printer, you must provide a share name. You can use the suggested name or type a new one. The share name will be visible to other network users.' Below this are two radio button options: 'Do not share this printer' (selected) and 'Share name:' (unselected) followed by an empty text box. At the bottom right, there are three buttons: '< Back', 'Next >', and 'Cancel'.



**Step 15** – Ensure that “No” is selected under “Do you want to print a test page?” and then click **Next**:



**Step 16** – **Finishing up** – the **Completing the Add Printer Wizard** screen appears. Click **Finish**:



Immediately after clicking on the Finish button, you will get a warning message about the driver software saying it has not passed Windows Logo testing. When you see this, click **Continue Anyway** and the warning window will close. You will now see a **Copying Files** window appear showing the file transfer. When the file transfer finishes, all windows will close:



After the Add Printer Wizard window closes, you will now see the new driver loaded. In this case there is now a **V CLASS** driver in the Printers & Faxes window:

